

UNIVERSITY of
HOUSTON

SCHOLAR ENRICHMENT PROGRAM

About SEP

UH's College of Natural Sciences and Mathematics implemented the Scholar Enrichment Program (SEP) in 1992 for the academic enhancement and retention of undergraduate students. The Scholar Enrichment Program is open to all students at UH, regardless of major.

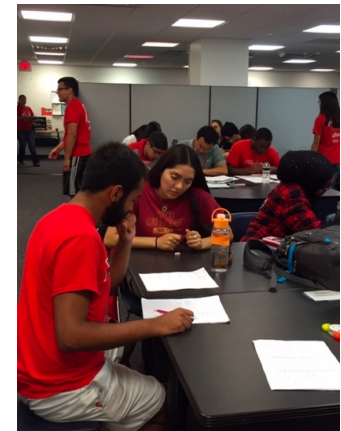
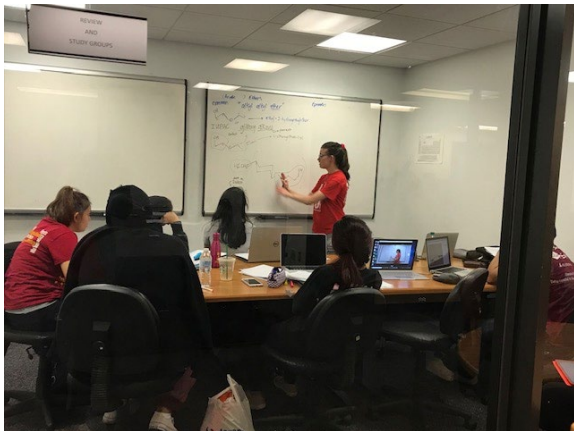


Major Goals

- Improve retention of minority students in STEM.
- Increase the number of underrepresented minority students who earn a baccalaureate degree in a STEM field.
- Increase the number of minority students who continue on to professional or graduate school.

Major Activities & Components

- Academic Excellence Workshops
- SEP Tutoring
- Collaborative Learning Groups (CLGs)
- Houston-Louis Stokes for Alliance Minority Participation

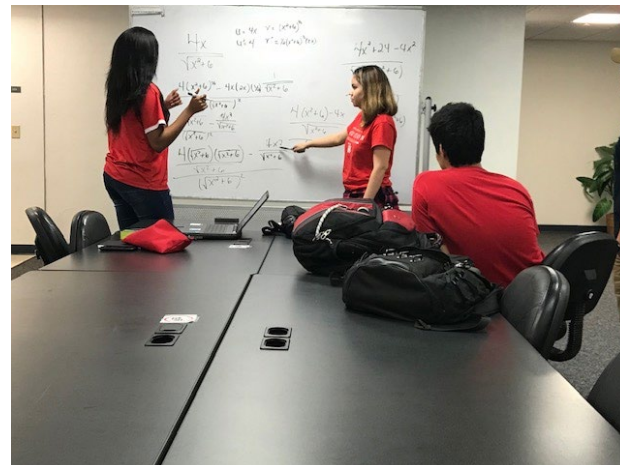


Academic Excellence Workshops

Workshops support students enrolled in gateway science and mathematics courses, such as calculus, chemistry, and physics. Workshops reinforce classroom learning by creating a team-building atmosphere, emphasizing proper study and communication skills, establishing time management skills, and providing problem solving skills to optimize success.

Benefits include:

- Small class size
- Collaborative learning
- Networking



Academic Excellence Workshops

We offered 81 workshops in the 2018-2019 academic year with a total enrollment count of 1,948. Each workshop is led by two peer facilitators.

Workshops were run by the 110 students in the program serving as assistant peer facilitators and peer facilitators, based on their level of experience and expertise.

Fall 2018		Spring 2019	
Number of Workshops:	40	Number of Workshops:	41
Subjects Supported:	General Biochemistry (2) Genetics (1) Precalculus (2) Calculus I (5) Calculus II (3) Calculus III (1) Engineering Mathematics (1) Chemistry I (4) Chemistry II (3) Organic Chemistry I (8) Organic Chemistry II (3) General Physics I (2) General Physics II (2) University Physics I (2) University Physics II (2)	Subjects Supported:	Precalculus (1) Calculus I (3) Calculus II (4) Calculus III (1) Engineering Mathematics (1) Chemistry I (5) Chemistry II (8) Organic Chemistry I (3) Organic Chemistry II (7) General Physics I (2) General Physics II (1) University Physics I (3) University Physics II (2)
Number of Students Enrolled:	970	Number of Students Enrolled:	978

Success of Workshops

Calculus II (Spring 2019)

Grade Distribution - Workshop (WS) vs No Workshop (No WS)

Grade	WS		No WS		Total	
A	54	59.34%	417	39.68%	471	41.24%
B	15	16.48%	220	20.93%	235	20.58%
C	9	9.89%	141	13.42%	150	13.13%
D	6	6.59%	84	7.99%	90	7.88%
F	7	7.69%	114	10.85%	121	10.60%
W	0	0.00%	75	7.14%	75	6.57%
ABC	78	85.71%	778	74.02%	856	74.96%
DFW	13	14.29%	273	25.98%	286	25.04%
TOTAL	91		1051		1142	

Chemistry I (Spring 2019)

Grade Distribution - Workshop (WS) vs No Workshop (No WS)

Grade	WS		No WS		Total	
A	10	7.63%	53	4.78%	63	5.08%
B	28	21.37%	143	12.89%	171	13.79%
C	48	36.64%	231	20.83%	279	22.50%
D	18	13.74%	177	15.96%	195	15.73%
F	20	15.27%	226	20.38%	246	19.84%
W	7	5.34%	279	25.16%	286	23.06%
ABC	86	65.65%	427	38.50%	513	41.37%
DFW	45	34.35%	682	61.50%	727	58.63%
TOTAL	131		1109		1240	

SEP Tutoring

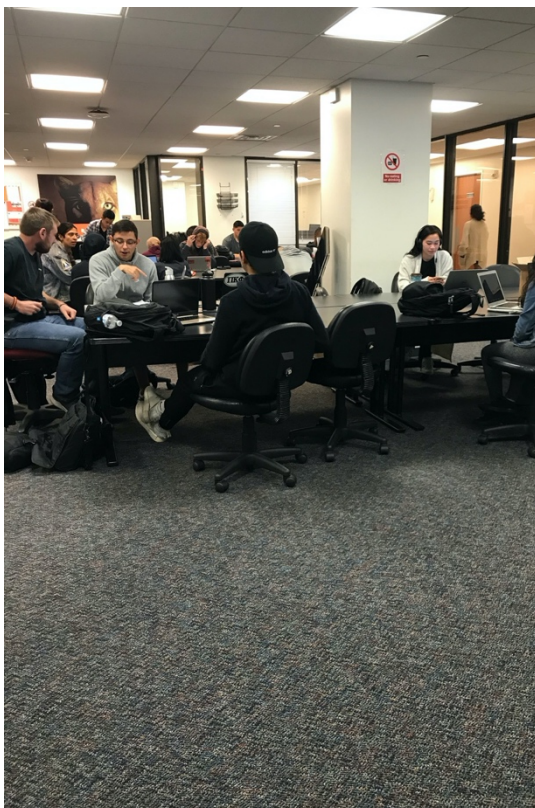
Students supported by the Scholar Enrichment Program continued to run a tutoring center in the program space in the library. For 2018-2019, 87 students served as tutors supporting students enrolled in 16 different STEM courses. The tutoring center is available to all students at the university.

SEP Tutoring

Tutoring is free and available to all students, regardless of major. Most tutoring sessions are one-on-one for a more focused and versatile experience.

Subjects	College Algebra
	Precalculus
	Calculus I, II, III
	Engineering Math
	Chemistry I, II
	Organic Chemistry I, II
	General Physics I, II
	University Physics I, II
	Biochemistry
	Genetics

We now offer tutoring in ENGI 1100 – Intro to Engineering, ENGI 1331 – Computer & Problem Solving , CHEE 2331 – Chemical Processes, and more!



UNIVERSITY of
HOUSTON
SCHOLAR ENRICHMENT PROGRAM



Contact Us



ecerna@central.uh.edu jmrodr24@central.uh.edu

Visit <https://uh.edu/nsm/scholar-enrichment/>